



CLOUD COLLECTED®

## RFID Gated Residential Driveway Access

### Product Overview

#### What is Cloud Collected?

Cloud Collected turnkey solutions harness Wireless, RFID, Sensor, Biometric and other technologies to provide Dynamic Asset Management (DAM) Real Time monitoring, tracking, and managing for single or multiple sites and locations.

Our Turnkey Solutions as a Service (TSaaS) are fitted to your needs, easy to implement, and capable of expansion at any time.

#### Our Products



##### Tracking

- RFID Vehicle Monitoring
- Dealership Vehicle Availability
- Delivery Truck Availability
- Mobile Asset Management
- EMC/EMT Vehicle Assets and Personnel
- Fire Apparatus Assets and Personnel
- Police Vehicle Assets and Personnel
- Utility Assets and Personnel
- Other First Responders
- Other Mobile Assets
- Personnel Management
- Tour Guide Monitoring
- School Bus Monitoring
- Office and Warehouse Personnel Tracking
- Animal Tracking
- Remote Site Asset Management
- Tag Readers and Testers



##### Access Control

- RFID Vehicle Access
- Gated Communities
- High Security Facilities
- Parking Garages
- Residential Gated Driveway
- Gate Access



##### Dynamic Assets

- Cloud Weapons Express
- Real Time RFID Weapons Issue
- Manual RFID Weapons Issue
- RFID Asset Tracking
- Barcode Asset Tracking



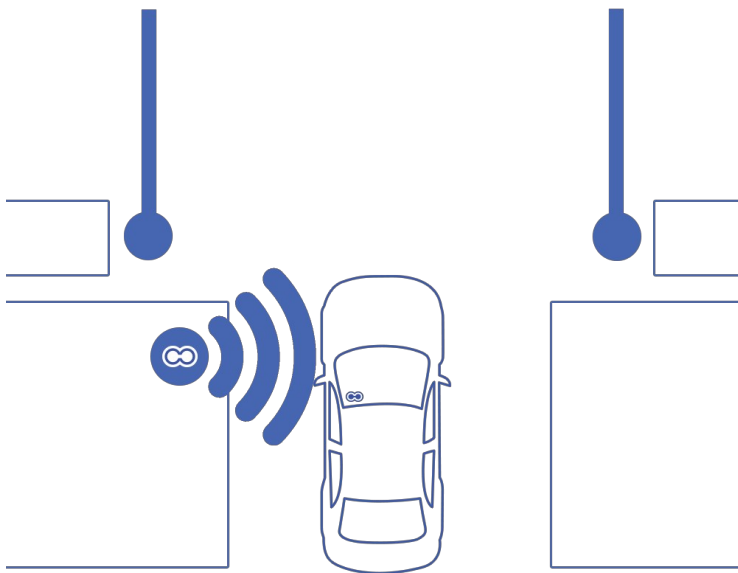
##### Temperature Monitoring

- Cloud Chain

# RFID-Enabled Gated Driveway provides seamless access to your residential property.

Do you have a gated driveway, and are looking to securely come and go with less hassle?

Our RFID-enabled Total Solutions as a Service (TSaaS) Gated Driveway solution utilizes RFID tags to determine a vehicle's real-time location in reference to a secured gate. With our RFID solution, our software will recongize when your vehicle is within range of the gate, and the gate will open - providing you a seamless experience.



## How it Works

Our real-time Gate Access Management solution harnesses wireless RFID tags to monitor a vehicle's proximity to a driveway access/security gate (or multiple gates).

With our vehicle RFID tag attached to your vehicle, our RFID software will detect the authorized tag and then grant you access when your vehicle enters a specified distance of the gate.

## Easy Setup & Installation

1



### We Customize Your Solution

Once we determine your requirements, we configure a package to fit into your location.

2



### You Receive the Package

The package will include everything you need to get up and running - from the RFID hardware and RFID tags to gate hardware and software needed.

3



### Connect Components

Components will be installation ready - all you will need to do is attach them to your desired location.

4



### Customize Settings

Using our web based cloud software, you manage authorized tags and customize any settings to fit your location(s).

5



### Place RFID Tag on Vehicle

Depending on the tag-type, either hang the tag on the vehicle's rearview mirror or attach it on the inside of the vehicle's windshield.

## Complete Package

Our real-time Property Access Management solution is a turnkey solution - we provide everything needed to get up and running. Our solution can be configured to include:

- **RFID Hardware** including vehicle RFID tags, antennas and readers
- **Required Gate Hardware** or gate controller integration components for your specific needs (*optional*)
- **All Software**
  - Local Gate Access Controller Software (Collection Agents)
- **Hardware Support Services** for multiple year support (*optional*)



## Vehicle RFID Tag Options

### Standard Windshield RFID Tag

These tags can be produced with your own logo, with or without a bar code and your choice of up to 4 colors or spot color and four color process.



- Standard colors include black, red, yellow, green and blue. Due to contrast needed for the bar code scanner all bar codes are black.
- Digital printing for detailed logos or special designs.
- All printing is subsurface which provides excellent resistance to solvents, caustics, acids and moderate.
- Standard Size: 10 cm x 2.5 cm (4 in x 1 in).
- Standard ID card footprint for attaching photo identification cards, Dynamic Tag Tracking

### Destructible Windshield RFID Tag

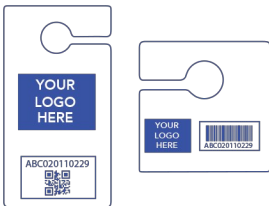
When you want a tag that looks exactly like our high quality Standard Windshield Tag, but you do not want the tag ever used for another vehicle, then our Destructible Windshield Tag is what you need. This tag is produced identically to our standard tag except that it has special slits in the inlay so that when someone tries to remove the tag it self destructs and can never be used again on another vehicle.



- These tags are produced with your own logo, with or without a bar code and your choice of up to 4 colors or spot color and four color process.
- Standard colors include black, red, yellow, green and blue. Due to contrast needed for the bar code scanner all bar codes are black.
- Digital printing for detailed logos or special designs.
- All printing is subsurface which provides excellent resistance to solvents, caustics, acids and moderate.
- Standard Size: 10 cm x 2.5 cm (4 in x 1 in).

### Rear View Mirror RFID Hang Tags

Rearview mirror hang tags that you can use for allowing temporary or even permanent access. These hang tags can be printed with your logos and even advertising for a memorable parking experience.



- **Small** 88.9 mm x 88.9 mm x 0.7 mm (3.5" x 3.5" x 0.027")
- **Large** 88.9 mm x 165.1 mm x 0.7 mm (3.5" x 6.5" x 0.027")

## Features and Components

Hardware	
RFID Hardware	
RFID Tags	Choice of: <ul style="list-style-type: none"> <li>- Standard Windshield RFID Tag</li> <li>- Destructable Windshield RFID Tag</li> <li>- Rearview mirror hang RFID Tag</li> </ul>
RFID Reader	UHF Gen 2 Supports 32 Antennas each <i>Multiple readers per location allowed</i>
RFID Antennas	Choice of over 50 antenna types depending on your installation needs. <i>Note: Additional mounting hardware may be required depending on your setup.</i>
Gate Hardware	
Gate Controllers	If you need a gate controller and gate hardware, we are a certified Toro reseller and can provide necessary gate hardware.
Gate Interface	If you already have a gate controller, we offer a relay module with both Normally Opened (NO) and Normally Closed (NC) options to open and close the gate. Simply tie the lines into your current gate hardware.

Software	
Local Collection Agents	
Mini-PC	A Mini-PC will be installed at each location to control all hardware components (RFID Readers/Antennas and Gate Interfaces). Network connectivity must be provided. The Mini-PC communicates with the cloud to determine which tags are authorized and log activity.
Cloud Synchronization	Local agents are kept up to date by the cloud. Each location will always have the latest authorized tag information. If there is a network outage at the location, the software will continue to run in a cached offline mode so that your operations will continue normally.
Cloud Software	
User Access	<ul style="list-style-type: none"> <li>- Grant your office staff access either by each location or across the entire organization.</li> <li>- View logs of user activity.</li> </ul>
Manage Tags	<ul style="list-style-type: none"> <li>- Upload your authorized tags via a spreadsheet and/or manage tags individually.</li> <li>- Grant or revoke access to the property or an individual gate on a per-tag level.</li> <li>- Add additional data to each tag such as vehicle type and owner.</li> </ul>
Locations	View the status of your gate locations in real time.
Reports	View reports showing vehicle in and out activity by gate. Export reports to Excel or print them for further review.
Alerts	Setup SMS or Email alerts from your system for: <ul style="list-style-type: none"> <li>- Location outages such as network or power failures.</li> <li>- Specific vehicle activity; receive an alert when a specified vehicle enters or exits the property.</li> </ul>
API	Looking to synchronize your current vehicle database system with ours? We offer a full RESTful API that allows you to get your data in real time. <ul style="list-style-type: none"> <li>- Asset Synchronization</li> <li>- Asset Activity Data Pulls</li> </ul>